

The Official Newsletter of the Center for Educational Measurement, Inc.

YEAR-END ISSUE

VOL IV | ISSUE 6



Center for
Educational
Measurement, Inc.

THE TEST OF EXCELLENCE

CEM ONLINE NEWSLETTER

ISSN-1656-8583



CEM is Giving beyond Gifting

This Christmas, CEM celebrates **GIVING** as a commitment to **SERVE**.

It is in **GIFTING** that we show our **GENEROSITY**,

but it is in **GIVING** that we express our **LOVE**.

When we **GIFT**, we change the **MOOD**,

but when we **GIVE**, we change the **WORLD**.

GIFTING fulfills our **RESPONSIBILITY**;

GIVING expands our **SENSIBILITIES**.

As we **GIVE**, we also receive the **GIFT** of **JOY**.

And this is the **BEST** gift that we could ever receive this season.

So we are sending you our **GIFT** of **SERVICE** by giving you the **BEST SERVICE**, always!

Visit bit.ly/2020cemChristmas to watch CEM Christmas greetings.

WHAT'S
INSIDE?

2

CEM CSR Presence
Amidst the Pandemic

3

Promoting Holistic
School Wellbeing in
Time of Pandemic
Webinar Series

4

CEM Virtual
Christmas Party

NMAT Online
November to December
Administration

CEM CSR Presence Amidst the Pandemic

CEM continues to support the education sector in the midst of this pandemic. On November 27, 2020 CEM conducted its CEM Storytelling and Reading Outreach Activity Year 2 in three indigent schools in the provinces of Rizal, Cebu and Saranggani. This initiative was facilitated by the Corporate Communications Section with a team of volunteers from Manila, Cebu and Davao Branches. This activity is part of CEM's corporate social responsibility (CSR) program in celebration of the Araw ng Pagbasa.

Due to the community quarantine restrictions, the usual

storytelling and reading activities with the students were alternatively replaced with the digital reading resources developed by CEM. These materials can be used by teachers as part of their enrichment activities for reading instruction. CEM also turned over other donation items to the chosen indigent schools, which include laptops, printers and printing supplies, school supplies and hygiene kits.

Visit <https://www.youtube.com/watch?v=7qW9WOFx2e4> to watch the video of the activity.



Production of digital reading resources



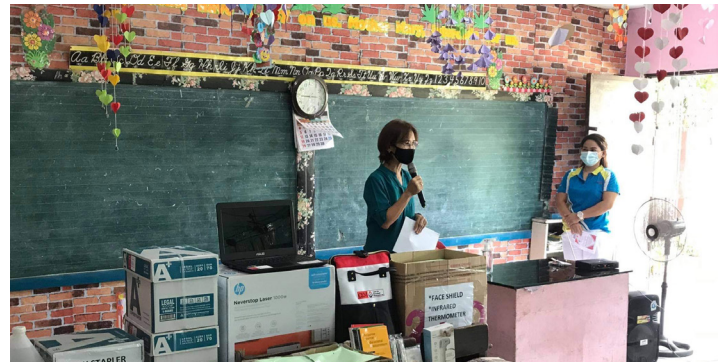
Beneficiaries from Papaya Academy, Inc. watching "Scat the Cat", one of the digital reading resources produced by CEM



CEM CSR Project Lead Aileen Cartagena and CSR Manila volunteers presenting the donations to the faculty and staff of Papaya Academy, Inc.



Donations for Tungkop Elementary School



CEM Cebu Branch Head Mussolini Yap presenting the donations to the faculty and staff of Tungkop Elementary School



CEM Davao Branch Head Dionisio Cervantes assembling the donations for Tagaytay Elementary School



Faculty and staff of Tagaytay Elementary School checking out the laptop provisioned by CEM

Promoting Holistic School Wellbeing in Time of Pandemic Webinar Series

CEM conducted a three-part webinar series on *Promoting Holistic School Wellbeing in Time of Pandemic* through Zoom as part of its program to support the education sector in its continuing pursuit of professional development amidst the pandemic. An average of 260 participants from various CEM member schools nationwide attended the online events.

Part 1: Managing Stress of Remote Learning in a Pandemic was facilitated by Dr. Niño Jose C. Mateo from De La Salle University (DLSU) on November 25, 2020 to provide participants with a review of the determinants of stress in the school setting and the different self-care strategies and lifestyle changes that will prevent adverse stress reactions in the long term.

Part 2 was about *Moving Towards a Mentally Healthy School Community* and was held on November 27, 2020. Ms. Karen Rose V. Vardeleon of Childfam-Possibilities Psychosocial Services discussed the early intervention programs, as well as protocols for handling special

cases that schools can use to promote mental health within the whole school community.

The last part of the series entitled *Building a School-wide Mental Health Program in the Next Normal* was conducted by Dr. Clarissa F. Delariarte, Associate Professor from DLSU and Far Eastern University. She discussed how outcomes-based and systems approach thinking can help schools in coming up with a relevant and responsive school-wide mental health program by identifying needed data from various sectors and determining specific outcomes and performance measures that will benefit all stakeholders.

These learning opportunities were organized by CEM's Professional Development Section as part of the exclusive privilege enjoyed by CEM member schools.

For more information on other CEM's Continuing Professional Development programs, visit www.cem-cpd.com.ph/.



L-R: Dr. Mateo, Ms. Vardeleon, and Dr. Delariarte during their respective webinar sessions

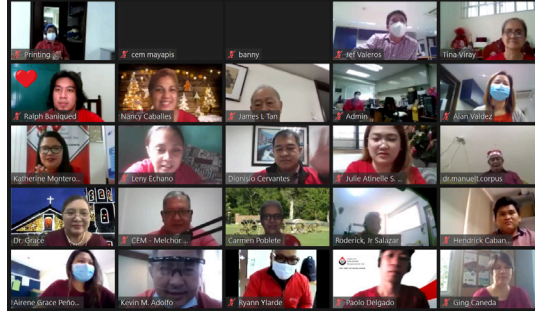
CEM Virtual Christmas Party

The pandemic cannot hinder CEM from holding its annual Company Christmas party. The virtual celebration, with the theme “Advent Joy during the Pandemic”, was held on December 15, 2020 via Zoom. It was attended by its Board of Trustees, Corporators and staff from Manila, Cebu and Davao. Employees enjoyed the online games and surprises prepared by the Socials Committee.

Take a look at some snaps from the online party:



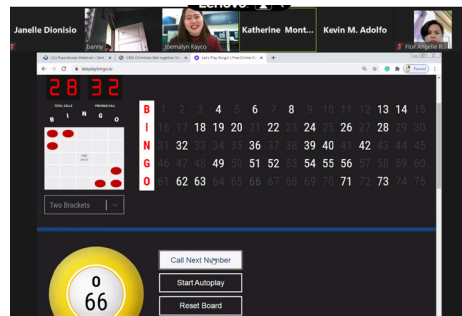
Rev. Fr. Arman Robleza, SDB celebrating the thanksgiving mass



Some of CEM staff during the virtual celebration



HR Head Kevin Adolfo drawing the raffle



CEM staff participating in the virtual bingo game



Dr. Grace H. Aguilin-Dalisay, CEM Vice-Chair of Board of Trustees, during her closing remarks



CEM staff participating in a Christmas community singing to culminate the celebration

**NMAT Online
November
to December
Administration**

CEM administered the National Medical Admission Test online on November 20 to December 2, 2020 using a secured online platform. A total of 2,908 candidates took the test on their preferred dates. Online results will be available for release on February 22-23, 2021 through www.cem-inc.org.ph/nmat.

Subscribe to our
Youtube channel



**Center for Educational
Measurement, Inc.**

Like our page
to get more updates



fb.com/cem.inc.org.ph

CEM^{ONLINE} NEWSLETTER

Editorial Staff

Content Creator:
Aileen A. Cartagena

Design and Layout:
Frances F.M.B. Cardona
Ralph Ronald J. Baniqued

Proofreader:
Janet T. Evasco



Center for
Educational
Measurement, Inc.

THE TEST OF EXCELLENCE

LIMITED
SPECIAL OFFER

CEM ONLINE ASSESSMENTS

Holiday Promo Bundles

BUNDLE 1

**English and
Mathematics**

BUNDLE 2

**English, Mathematics
and Science**

BUNDLE 3

**Graduate Level Test (GLT)
and
Panukat ng Pagkataong
Pilipino (PPP)**

BUNDLE 4

**Law School Qualifying
Test (LSQT)
and
Panukat ng Pagkataong
Pilipino (PPP)**

BUNDLE 5

**Philippine Aptitude
Classification Test (PACT)
and
CEM Profiler**

SPECIAL OFFER

**Readiness Test for
Colleges and Universities
(RTCU)**

Also avail **great discounts** on regular tests

To know more about this special offer, contact:



(0999) 221-2545 , (0999) 221-2544, (0999) 221-2543
(0999) 221-2553, (0999) 221-2537



crs@cem-inc.org.ph

Promo is valid for schools with signed TSAF from **December 15, 2020** to **February 28, 2021**.