

The Official Newsletter of the Center for Educational Measurement, Inc.

JUNE 2020

VOL IV | ISSUE 2



# CEM ONLINE NEWSLETTER

ISSN-1656-8583

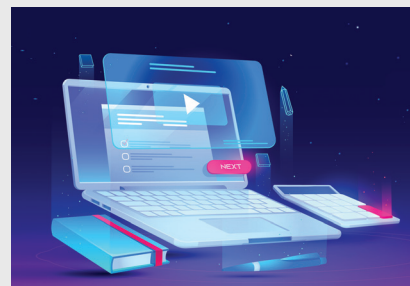
## What's in store for you?

CEM's response to the challenges brought about by this COVID-19 pandemic is a diversification approach which primarily involves migration from the known modalities to a whole new experience both for internal and external stakeholders.

### CEM Tests

Currently, we have over 70 standardized tests that measure students' academic competence and potential and determine their interests and personality, most of which are being converted from the traditional paper-and-pencil into a computer-based platform so our clientele can access them remotely at the comforts of their home. For more information about the CEM Online Assessments, please contact your testing coordinator or visit <https://www.cem-inc.org.ph/products>.

**See Page 4 for the CEM Online Assessments Flyer**



### CEM Professional Development Programs

Over the years, CEM has developed a number of Professional Development modules designed to help member schools maximize the use of their test data for the improvement of students' academic performance and their institutional programs as well. This year, these seminar-workshops will be transformed into an online training program with PRC accreditation and CPD points. Bonafide members may avail of the centralized seminar-workshops on Data Utilization for CEM Achievement / Career Guidance Tests, Homeroom Guidance, Classroom Assessment and Classroom Management.

#### NEW CEM PROFESSIONAL DEVELOPMENT PROGRAMS



**Change Management:  
The Proactive School Leader**



**Analyzing Student Learning for  
Continuous School Improvement**



**Research Writing: Bridging Data in  
Classroom and School Practice**

For more information on these services, you may visit <https://www.cem-inc.org.ph/services>.

## CEM Webinar Series

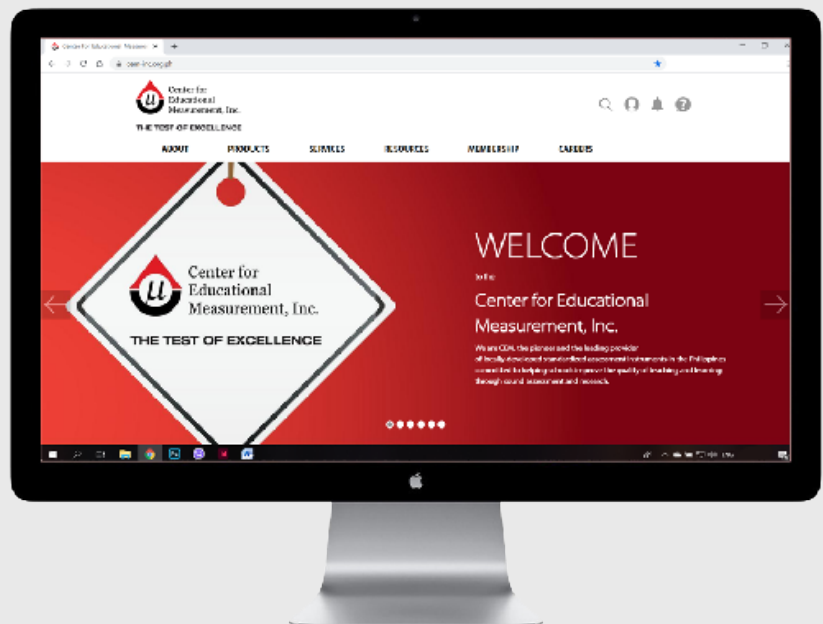
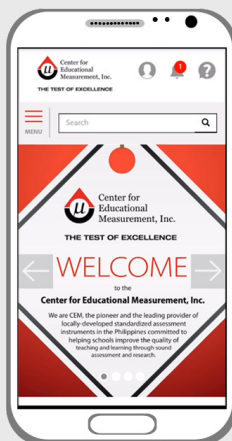
CEM conducted the first of its Webinar Series focusing on Organizational Risk Assessment Guideposts for Schools on July 20, 2020 from 09:00 to 12:00 AM via Zoom. It was facilitated by Mr. John Ray M. Dela Cruz, CEM Director for Operations and was attended by 43 participants from 28 schools nationwide. This webinar aims to gather the participants' understanding of risk assessment and to discuss a sound risk assessment process in relation to one's own school context.

The second installment of the webinar series entitled "Cultivating Collective Resilience in these Challenging Times" will be held on August 7, 2020 from 09:00 to 12:00 AM, also via Zoom. We have invited Dr. Grace Evangelista, Chair of the Department of Psychology and faculty member of Miriam College to share her expertise in dealing with mental health issues in relation to the education landscape.



## CEM Website Revamp

CEM has recently launched its revamped website to update its overall appearance and features. The improved website was designed for easy navigation, more products, services and events information, efficient inquiry system, member sign up and log-in and up-to-date notifications. It is also responsive in other mobile devices and social media integrated for a better screen and online experience. Visit [www.cem-inc.org.ph](http://www.cem-inc.org.ph) to discover the new features of the CEM website.



Subscribe to our  
**Youtube channel**



**Center for Educational  
Measurement, Inc.**

Like our page  
to get more updates



[fb.com/cem.inc.org.ph](https://fb.com/cem.inc.org.ph)

**CEM** O N L I N E  
**NEWSLETTER**

### Editorial Staff

Content Creator:  
**Aileen A. Cartagena**

Design and Layout:  
**Frances F.M.B. Cardona**  
**Ralph Ronald J. Baniqued**

Proofreader:  
**Janet T. Evasco**

## CEM Connections

After our first stint on the airwaves through the CEM On Air which was aired on Radyo Veritas every Saturday at 8:00 to 8:30 AM, from September 7, 2019 to February 22, 2020, we are going digital by launching the CEM Connections. It is an online discourse on assessment and education-related issues which will be published mainly through the CEM Youtube Channel and Facebook page. Watch the pilot episode here: <https://www.youtube.com/channel/UCZf4hOWP3YoQjVZTsK197ZQ>



## COMMUNITY CORNER

*On CEM Webinar on Organizational Risk Assessment Guideposts for Schools*

Here are some feedback collected through an online form from the participants of the CEM Webinar on Organizational Risk Assessment Guideposts for Schools:

"It's impressive how Risk Assessment was demonstrated in such a quantifiable manner."

"This is a timely and relevant webinar in the light of what we are all experiencing during this pandemic. The matrix that Sir John shared will be quite helpful as we equip our church-schools in identifying and assessing the risks they are facing."

"Hope to have more of these kinds of webinar which are informative as well as a chance to share best practices."

"Risk assessment should be given serious thought. There are so many things happening right now that schools are not prepared to handle. It's better to be prepared early than be flat-footed and unable to properly respond later."



# CEM Online Assessments

Your cutting-edge tool to revolutionize testing in the new normal

## Key Features

### Advanced Data Security

Data collection, processing and reporting procedures meet high security standards

### Secure Log-in and Identity Verification

Access to test materials requires strict identity verification

### Advanced Browser Platform

Installation of secure browser ensures validity and reliability of test administration

### Smart AI and Anti-cheat Technology

Remote online proctoring using Artificial Intelligence and Live proctors secures the integrity of the exam process

### Easy to Understand Instructions

Preparatory Orientation Videos are provided to guide examinees in acing the test

### World-class Test Development and Administration

Assessment Instruments are systematically developed using standard procedures in partnership with a global consulting outfit

For test scheduling, you may call

0999-2212606, 0999-2212607,  
0999-2212608, 0999-2212554,  
0999-2212553, 0999-2212551,  
or 0945-8128488.



Center for  
Educational  
Measurement, Inc.

THE TEST OF EXCELLENCE



Test Service: (63 2)8804-2145, 8895-8236

Membership: (63 2) 8893-3945



(63 2) 8894-5536 and 8894-1392



membership@cem-inc.org.ph



[www.cem-inc.org.ph](http://www.cem-inc.org.ph)



Like us on Facebook  
[fb.com/cem.inc.org.ph](https://fb.com/cem.inc.org.ph)